



## 442 • Aluminium panel instrument case

### Aluminium panel instrument case

- high stability due to closed extruded aluminium profile
- well suited for EMC shielding due to conductive coating
- as an alternative to the removable plastic front frame, a transparent door from our standard product line can also be attached (see page 12)

#### Material:

enclosure/mounting extrusion:  
aluminium

frame: Zinc, die-cast

front / rear panel: aluminium 2,5 mm

front frame: PC, black

#### Finish:

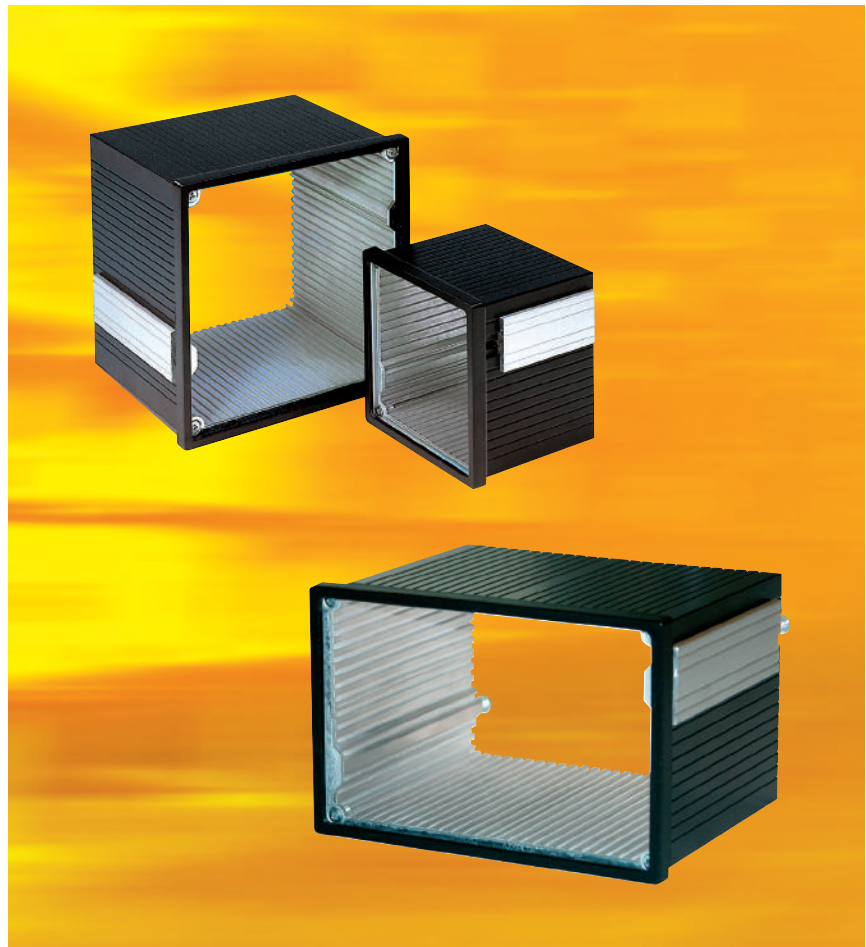
enclosure extrusion:

exterior finish RAL 9005 deep black,  
interior conductive

mounting extrusion: anodized

zinc die-cast frame: conductive surface

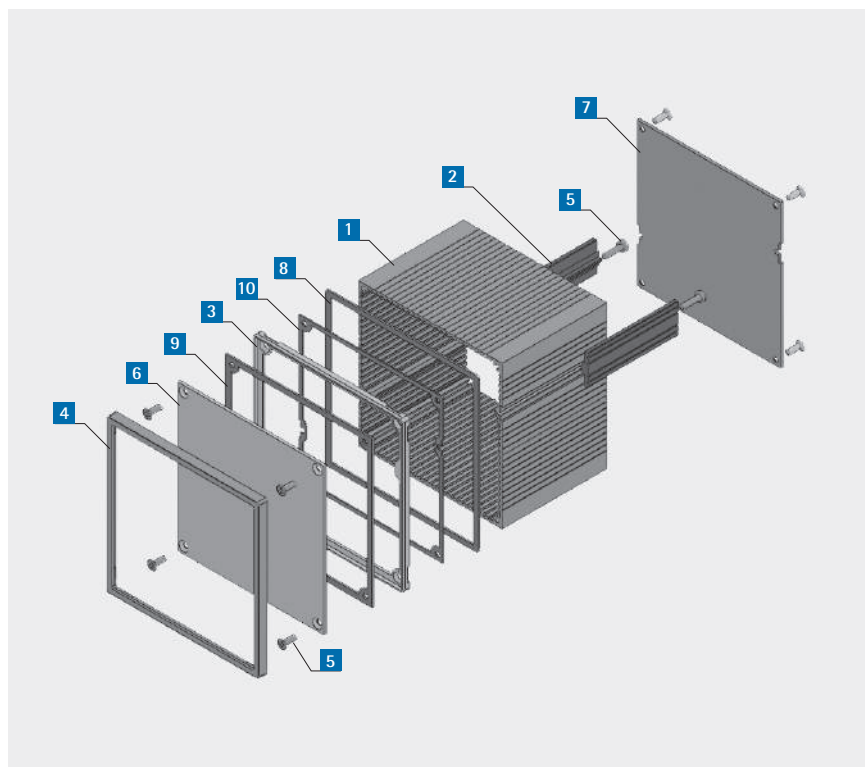
front / rear panel: exterior anodized,  
conductive rear



Other dimensions and individual colours and machining on request. Please order front panel, rear panel and sealings separately!

### Available components

Item	Pc.	Description
1	1	Enclosure extrusion
2	2	Mounting extrusion
3	1	Frame
4	1	Front frame
5		Mounting material
6		Front panel
7		Rear panel
8		Sealing between case and panel
9		Sealing between front panel and case
10		Sealing between frame and extrusion





## Aluminium panel instrument case 96 x 96 (W x H)

D mm	d mm	1-5 Case	6 Front panel	7 Rear panel	8 Sealing between case and panel	9 Sealing between front panel and case	10 Sealing between frame and profile
60,0	51,50	442-300-00	442-310-00	442-313-00	442-315-01	442-315-02	442-315-03
82,0	73,50	442-301-00	442-310-00	442-313-00	442-315-01	442-315-02	442-315-03
107,0	98,50	442-304-00	442-310-00	442-313-00	442-315-01	442-315-02	442-315-03
116,0	107,50	442-302-00	442-310-00	442-313-00	442-315-01	442-315-02	442-315-03
138,0	129,50	442-303-00	442-310-00	442-313-00	442-315-01	442-315-02	442-315-03
163,0	154,50	442-305-00	442-310-00	442-313-00	442-315-01	442-315-02	442-315-03
209,0	200,50	442-306-00	442-310-00	442-313-00	442-315-01	442-315-02	442-315-03

## Aluminium panel instrument case 144 x 96 (W x H)

D mm	d mm	1-5 Case	6 Front panel	7 Rear panel	8 Sealing between case and panel	9 Sealing between front panel and case
60,0	51,50	442-320-00	442-330-00	442-333-00	442-335-01	442-335-02
82,0	73,50	442-321-00	442-330-00	442-333-00	442-335-01	442-335-02
107,0	98,50	442-324-00	442-330-00	442-333-00	442-335-01	442-335-02
116,0	107,50	442-322-00	442-330-00	442-333-00	442-335-01	442-335-02
138,0	129,50	442-323-00	442-330-00	442-333-00	442-335-01	442-335-02
163,0	154,50	442-325-00	442-330-00	442-333-00	442-335-01	442-335-02
209,0	200,50	442-326-00	442-330-00	442-333-00	442-335-01	442-335-02

## Aluminium panel instrument case 144 x 144 (W x H)

D mm	d mm	1-5 Case	6 Front panel	7 Rear panel	8 Sealing between case and panel	9 Sealing between front panel and case	10 Sealing between frame and profile
60,0	51,50	442-360-00	442-370-00	442-373-00	442-375-03	442-375-02	442-375-01
82,0	73,50	442-361-00	442-370-00	442-373-00	442-375-03	442-375-02	442-375-01
107,0	98,50	442-364-00	442-370-00	442-373-00	442-375-03	442-375-02	442-375-01
116,0	107,50	442-362-00	442-370-00	442-373-00	442-375-03	442-375-02	442-375-01
138,0	129,50	442-363-00	442-370-00	442-373-00	442-375-03	442-375-02	442-375-01
163,0	154,50	442-365-00	442-370-00	442-373-00	442-375-03	442-375-02	442-375-01
209,0	200,50	442-366-00	442-370-00	442-373-00	442-375-03	442-375-02	442-375-01

## Internal dimensions

